

Madison, Wisconsin

CITY OF MADISON

CITY ENGINEERING DIVISION DEPARTMENT OF PUBLIC WORKS

PLAN OF PROPOSED IMPROVEMENT

NEW SIDEWALK INSTALLATION 2017

PUBLIC IMPROVEMENT PROJECT APPROVED

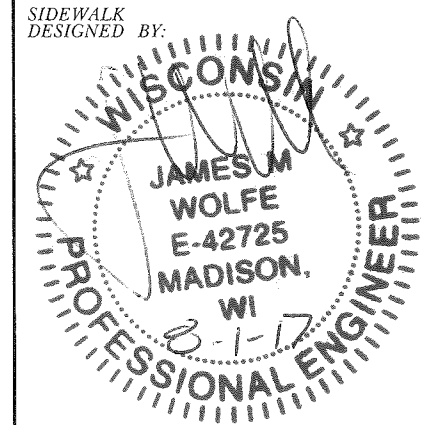
AUGUST 1, 2017

BY THE COMMON COUNCIL
OF MADISON, WISCONSIN

PUBLIC IMPROVEMENT DESIGN
APPROVED BY:

[Signature] 8/2/17
City Engineer Date

SIDEWALK
DESIGNED BY:



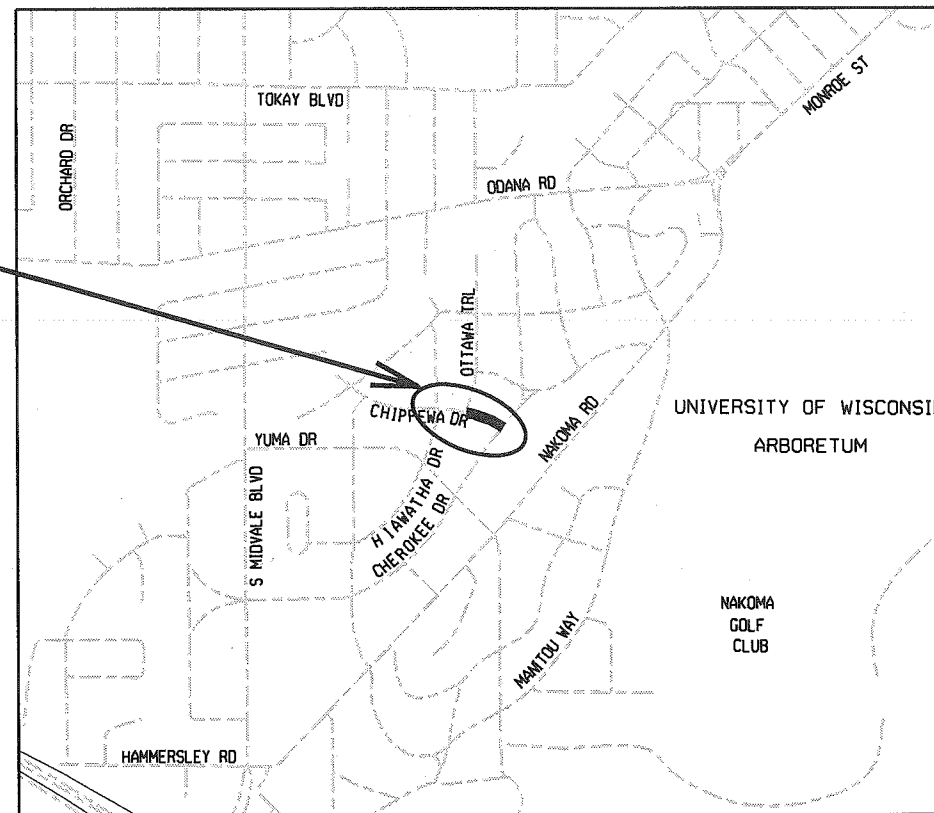
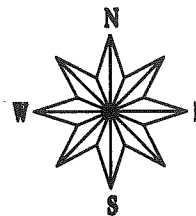
INDEX OF SHEETS

SHEET NO.	TITLE
1	TYPICAL SECTIONS
D-1	SIDEWALK PLAN AND PROFILE
P-1	SIDEWALK CROSS SECTIONS
XI-X2	

CITY PROJECT NO. 11571
CONTRACT NO. 7896

CONVENTIONAL SIGNS	
FIELD VERIFY ALL UTILITY LOCATIONS	
GAS	— G —
STORM SEWER	— ST —
SANITARY SEWER	— SAN —
WATER	— W —
OVERHEAD ELECTRIC	— OH —
POWER POLE	⊔

PROJECT
LOCATION



NOTES:

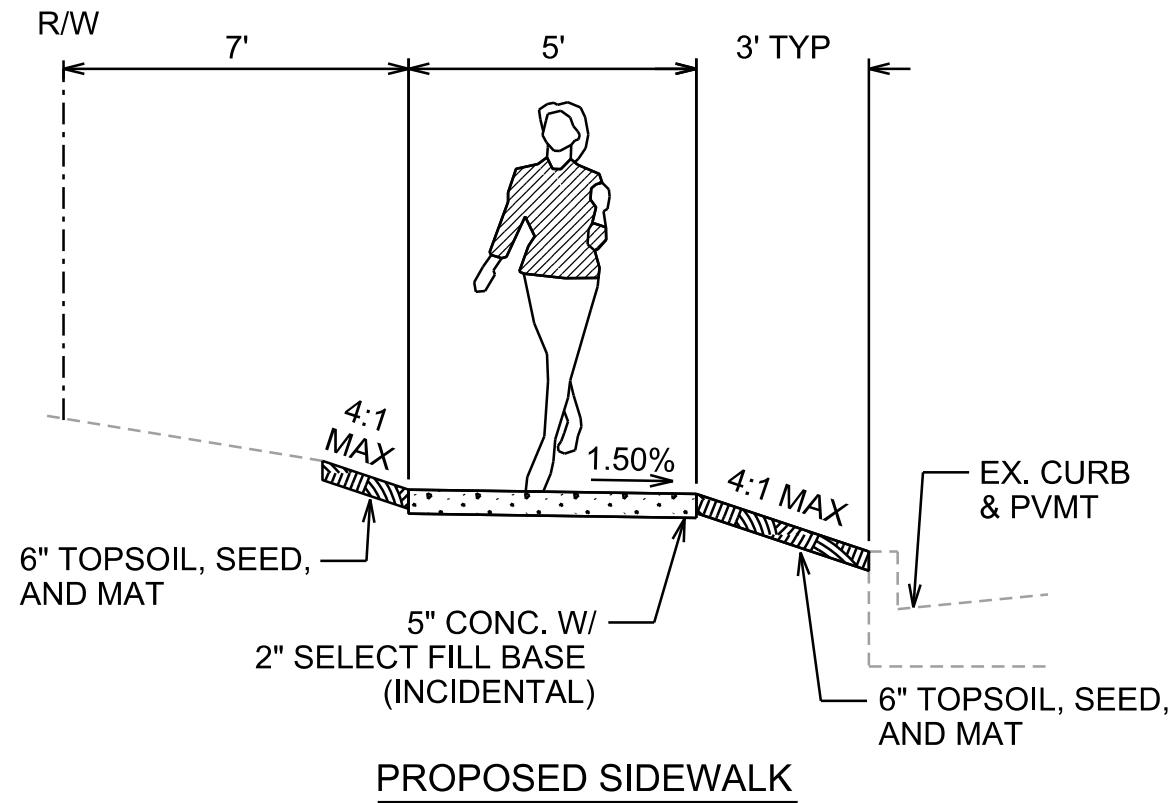
SIDEWALK RAMPS AND CURB THRU SIDEWALK RAMPS SHALL HAVE A MAXIMUM SLOPE OF 1" PER 12". SIDEWALK AND CURB RAMPS SHALL BE CONSTRUCTED WITH A SIDE SLOPE OF 1.50%. SIDEWALK SHALL HAVE A MINIMUM LONGITUDINAL SLOPE OF 0.50% AND A MAXIMUM LONGITUDINAL SLOPE OF 5.00% UNLESS OTHERWISE SHOWN

PLOT SCALE: _____

PLOT NAME: _____

REV. DATE: _____

ORIGINATOR: CITY OF MADISON, STREETS DIVISION



PLOT SCALE: _____

PLOT NAME: _____

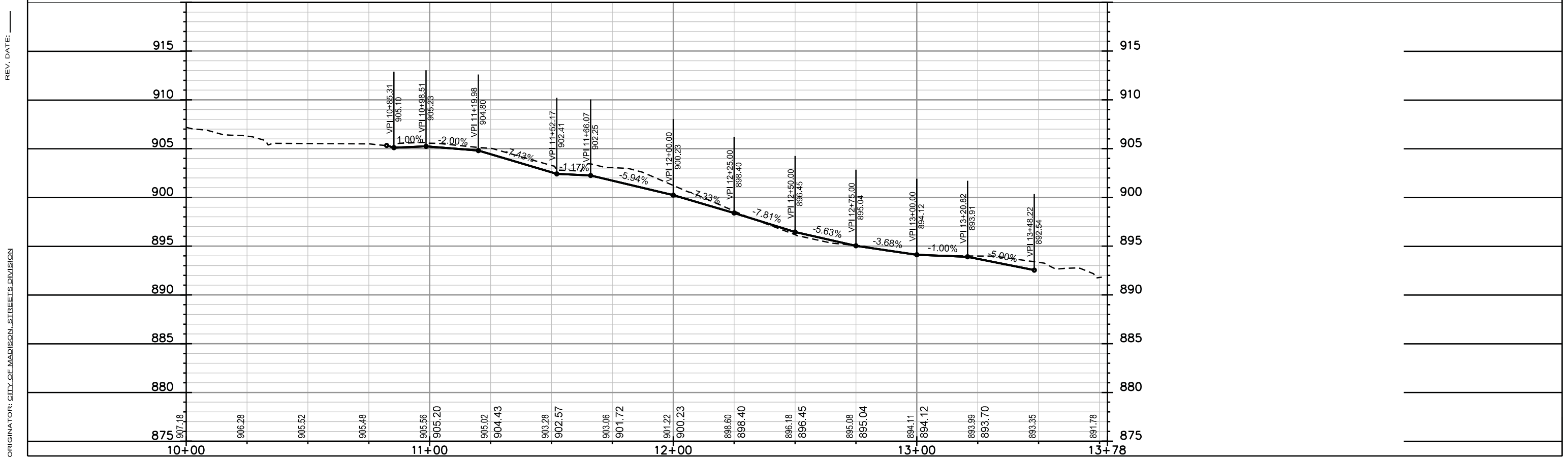
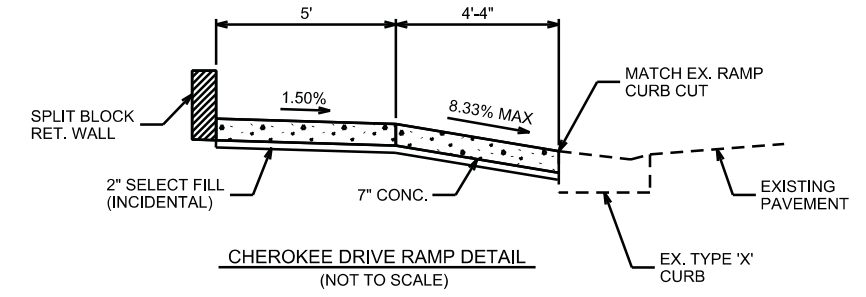
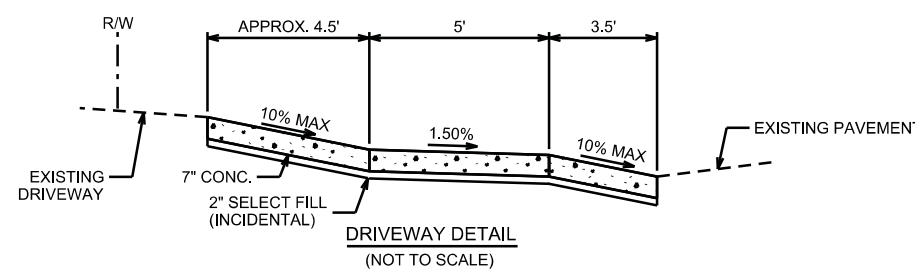
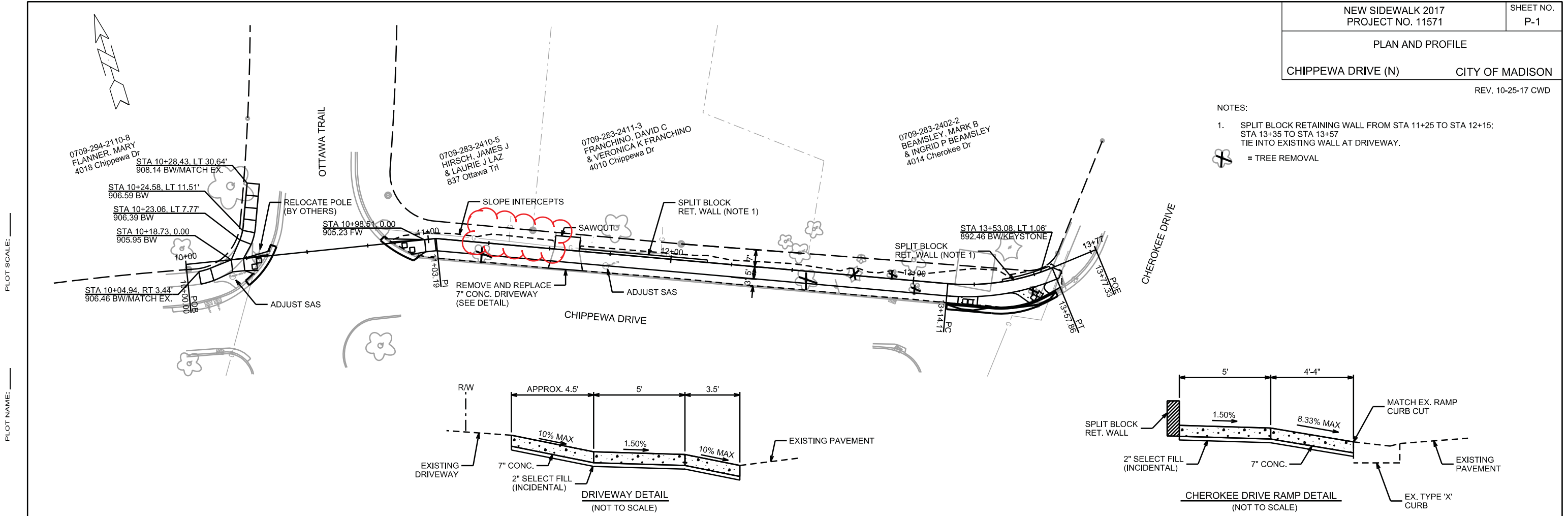
REV. DATE: _____

ORIGINATOR: CITY OF MADISON, STREETS DIVISION

NOTES:

- SPLIT BLOCK RETAINING WALL FROM STA 11+25 TO STA 12+15; STA 13+35 TO STA 13+57 TIE INTO EXISTING WALL AT DRIVEWAY.

 = TREE REMOVAL



CROSS SECTIONS

CHIPPEWA DRIVE (N) CITY OF MADISON

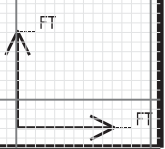
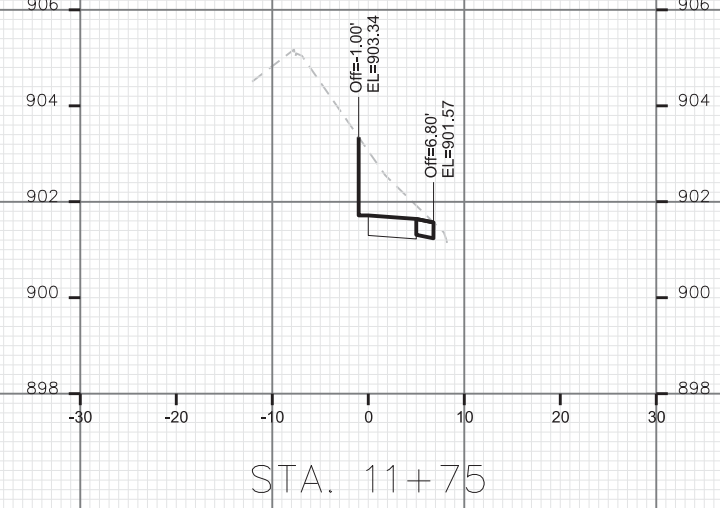
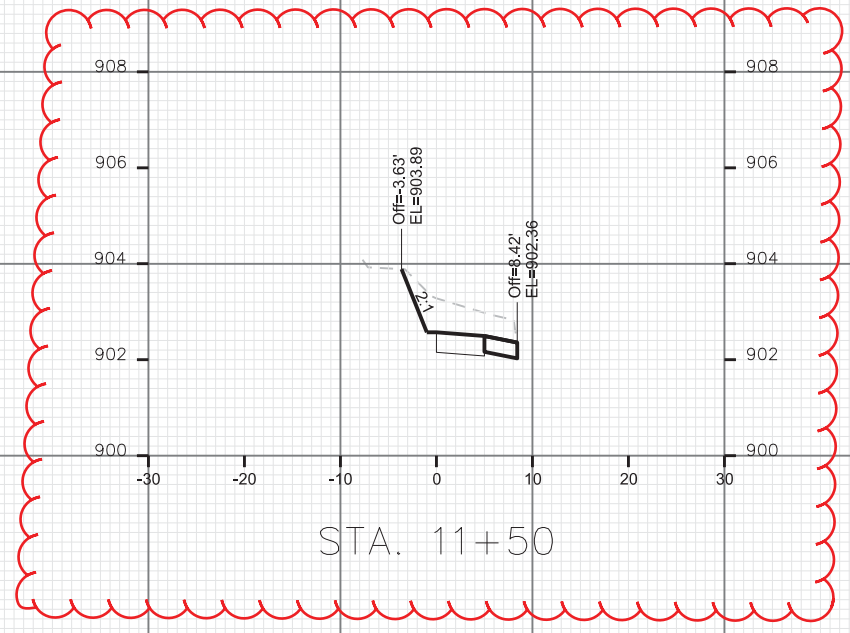
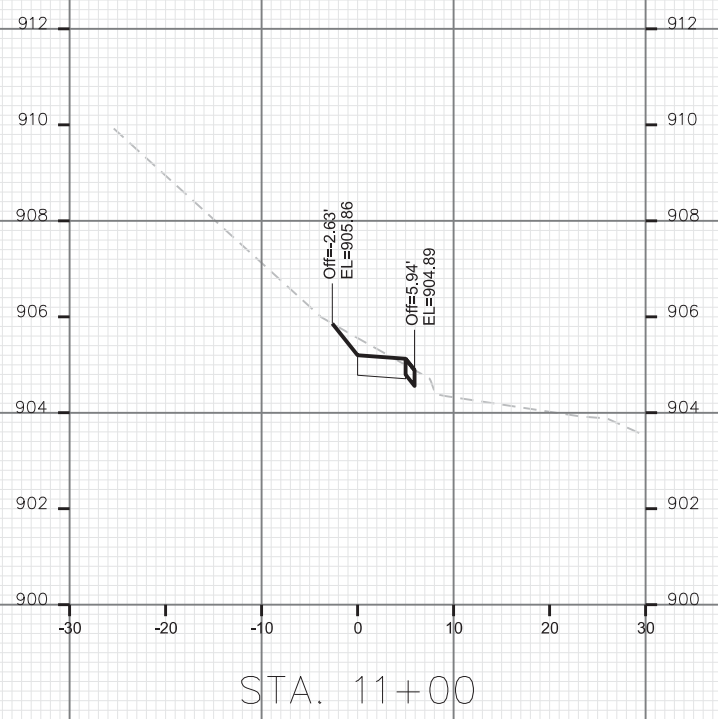
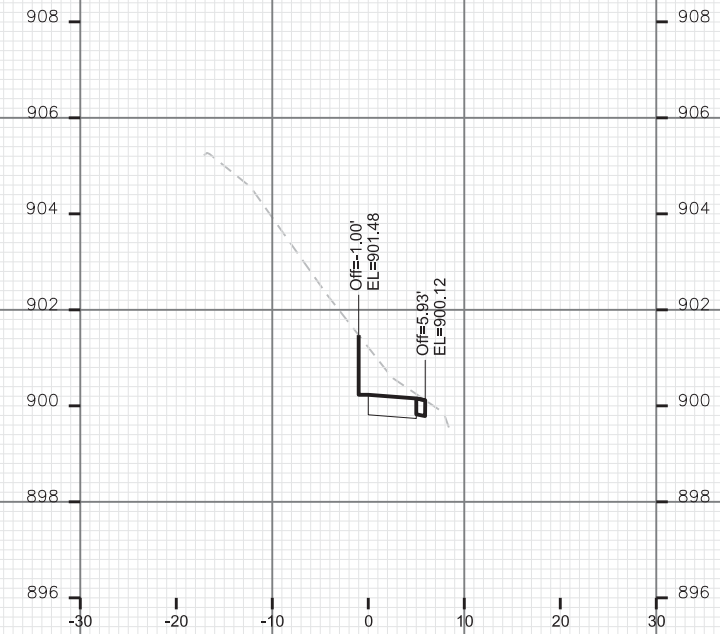
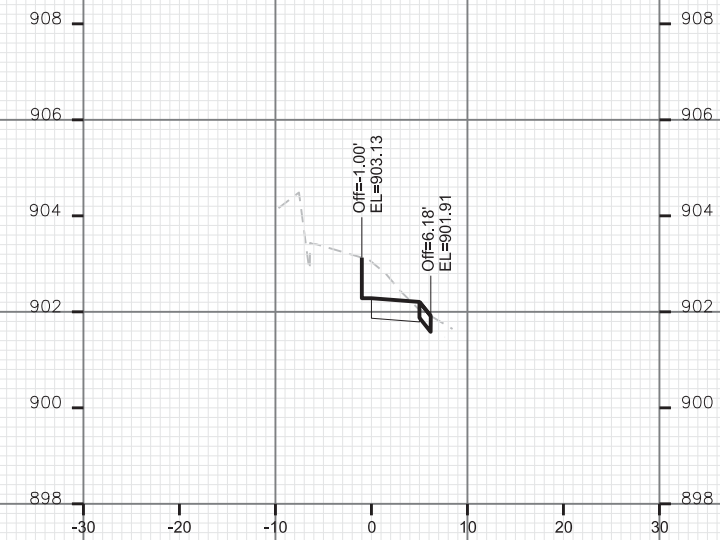
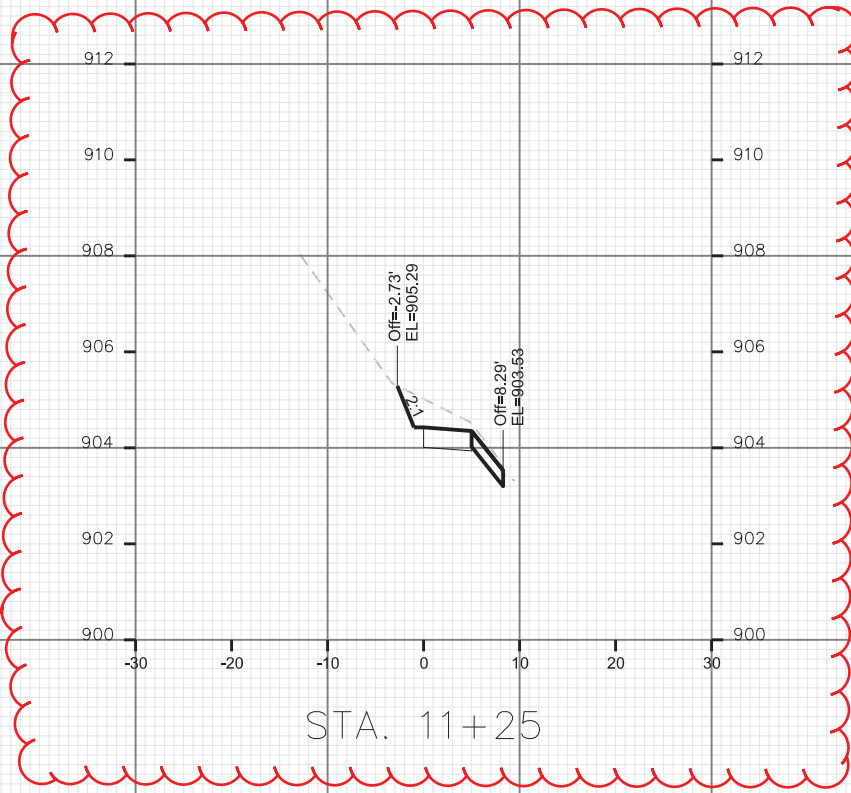
REV 10-25-17 CWD

PLOT SCALE: _____

PLOT NAME: _____

REV. DATE: _____

ORIGINATOR: CITY OF MADISON, STREETS DIVISION



CROSS SECTIONS

CHIPPEWA DRIVE (N)

CITY OF MADISON

REV 8-9-17 JMW

PLOT SCALE: _____

PLOT NAME: _____

REV. DATE: _____

ORIGINATOR: CITY OF MADISON, STREETS DIVISION

